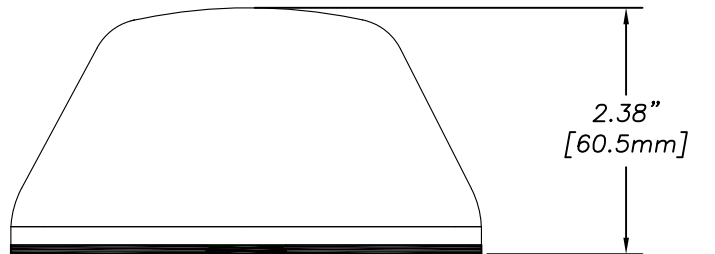


LTM504-3C3C3C3C2C-WHT-180

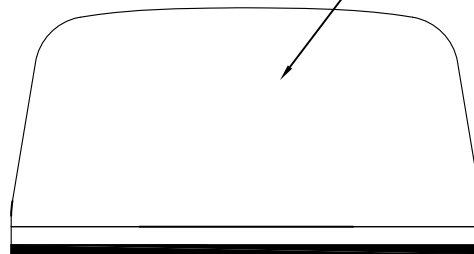
Dual Band WiFi MIMO Antenna 4 X 2.4-2.5GHz, 4.9-6 GHz (802.11n) with GPS 1575 MHz



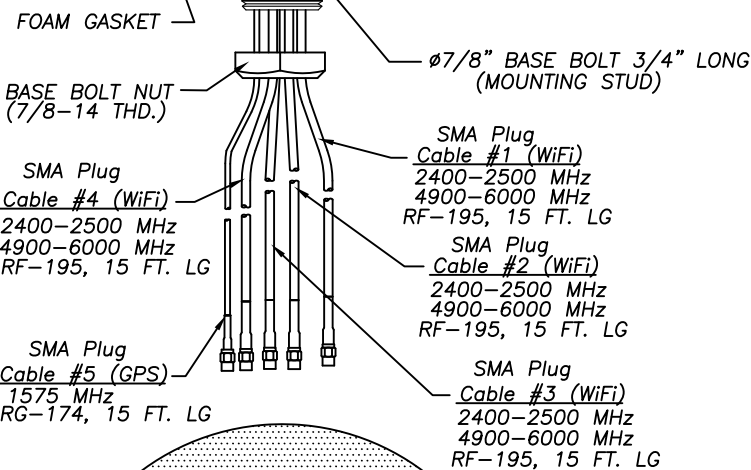
WHITE ASA
PLASTIC RADOME



SIDE VIEW

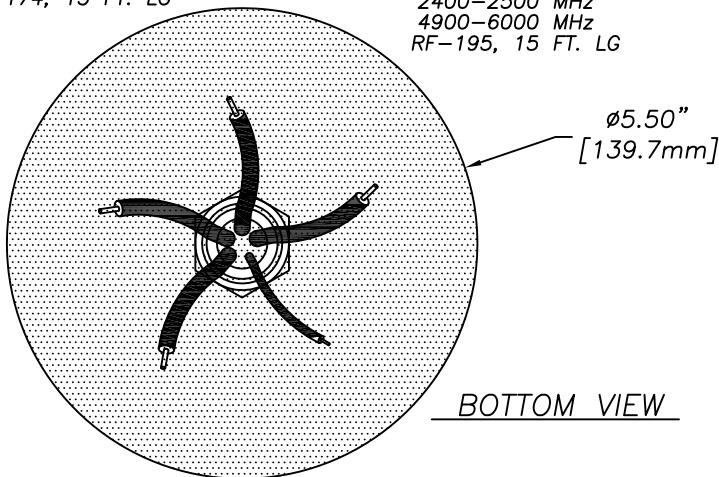


FRONT VIEW



Frequency and Cable Table

<u>CABLE NO. 1 (RF-195 CABLE)</u>
2400-2500 MHz (WiFi)
4900-6000 MHz (WiFi)
<u>CABLE NO. 2 (RF-195 CABLE)</u>
2400-2500 MHz (WiFi)
4900-6000 MHz (WiFi)
<u>CABLE NO. 3 (RF-195 CABLE)</u>
2400-2500 MHz (WiFi)
4900-6000 MHz (WiFi)
<u>CABLE NO. 4 (RF-195 CABLE)</u>
2400-2500 MHz (WiFi)
4900-6000 MHz (WiFi)
<u>CABLE NO. 5 (RG-174)</u>
1575.42 ±2 MHz (GPS)



BOTTOM VIEW

Antenna Specifications

- **Freq/Gain: ————— 2.4-2.5 GHz/4.9-6 GHz 5dBi Peak
- GPS Unit Gain ————— 26 dB, 5 dBi Antenna
- Voltage ————— 3.3/5 VDC
- Current ————— 10mA (typ.), 20mA (max.)
- VSWR: ————— < 2:1 VSWR over range
- Maximum Power: ————— 10 Watts
- Connectors/Interface: — SMA Plugs (WiFi) SMA Plug (GPS)
- Case: ————— 5.50" Dia. x 2.38" High
- Radome Material: ————— ASA UV Inhibitive Plastic
- Cable ————— cable 1 — RF-195, 15 ft. (2.4-2.5 GHz/4.9-6 GHz)
- cable 2 — RF-195, 15 ft. (2.4-2.5 GHz/4.9-6 GHz)
- cable 3 — RF-195, 15 ft. (2.4-2.5 GHz/4.9-6 GHz)
- cable 4 — RF-195, 15 ft. (2.4-2.5 GHz/4.9-6 GHz)
- cable 5 — RG-174, 15 ft. (GPS 1575 MHz)
- Impedance: ————— 50 OHM Nominal
- Water Ingress: ————— IPX7 (when properly mounted)
- Shock & Vibration: ————— IEEE1478, EN61373, MIL-810G, TIA 329.2-C
- Mounting: ————— 7/8" Dia. Feed through.
- 3/4" lg. thread for up to
- 1/2" thick surface
- Operating Temperature: ————— -40° to +80° C



US OFFICE & HEADQUARTERS: 1140 W. THORNDALE AVE. ITASCA, IL 60143
TEL: (847) 671-8690 * FAX (847) 250-5120
UK OFFICE: 8 MIRAS BUS PARK, KEYS PARK ROAD, HEDNESFORD WS12 2FS, UK.
UK TEL: (+44) 1543-459555 FAX (+44) 1543-459545
VISIT OUR WEBSITE AT WWW.MOBILEMARK.COM



** Gain measured with 1 ft. cables on 12" Ground Plane 2/20/15