

# IDS-5011F



## ► Industrial 1-port secure serial to Ethernet device server with 1xRS-232/422/485 and 1x100Base-FX

### Features

- Operating Modes: Virtual Com, Serial Tunnel, TCP Server, TCP Client, UDP
- Redundant multiple host devices :  
5 host devices : Virtual COM, TCP Server, TCP Client mode;  
4 IP ranges : UDP
- NAT Pass-Through : the user can manage IDS-5011F through NAT router
- Security: SSL data encryption; secured management by HTTPS and SSH  
H: IP Access: IP White List
- Internet Communication: PPPoE
- Update DNS Hostname: DDNS
- Event Warning by Syslog, Email, SNMP trap, and Beeper
- Configurable by Web-based and Windows utility (DS-Tool)
- Various Windows O.S. supported: Windows NT/2000/ XP/ 2003/VISTA  
(32bit/64bit) /Windows 7(32bit/64bit)



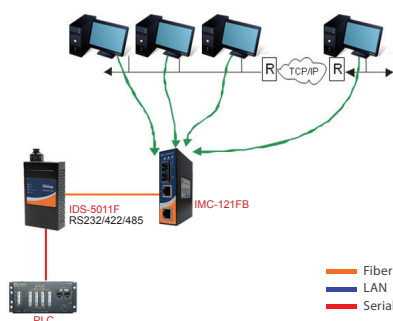
### Introduction

IDS-5011F is an innovative secure 1-port RS-232/422/485 to 1-port optic fiber Ethernet port secure serial to Ethernet device server featuring the standard features of device server, such like TCP/IP interface and versatile operation modes: Virtual Com, Serial Tunnel, TCP Server, TCP Client, UDP. In addition, the Windows utility, DS-Tool, could configure multiple devices and set up the mappings of Virtual Com. The features of NAT Router Pass-Through, DDNS, and PPPoE make it more convenient for administrators to configure ORing's device servers through NAT router from different IP domains or Internet via modem remotely. On the other hand, IDS-5011F can simultaneously transfer data up to 5 redundant host PCs to avoid Ethernet connection breakdown or any host PC fails. Further, IDS-5011F features HTTPS, SSH, and SSL encryption to assure the security of critical data transmission.

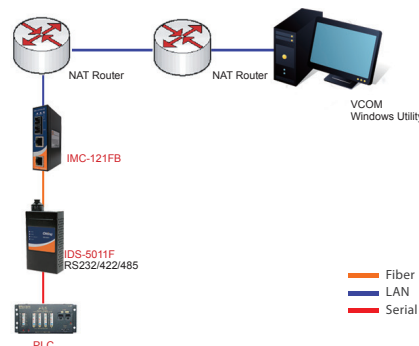
IDS-5011F provides dual redundant power inputs, 12~48 VDC, on DC power jack and terminal block to guarantee a non-stop operation. With wide operating temperature, -40~70°C, and rugged IP-30 housing design, IDS-5011F could operate in the harsh industrial environment. Therefore IDS-5011F is the best solution to the high demand of secure serial to Ethernet critical data communication.

### Practical Operation

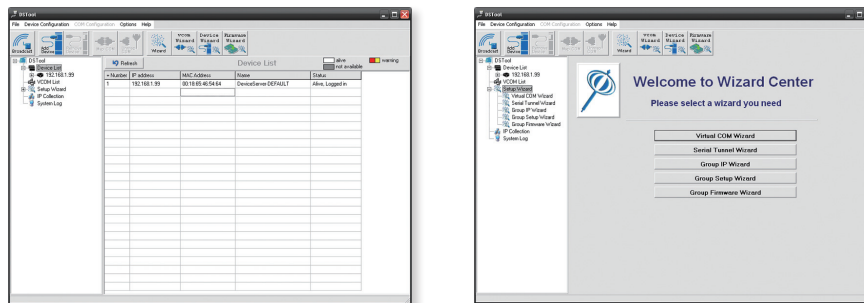
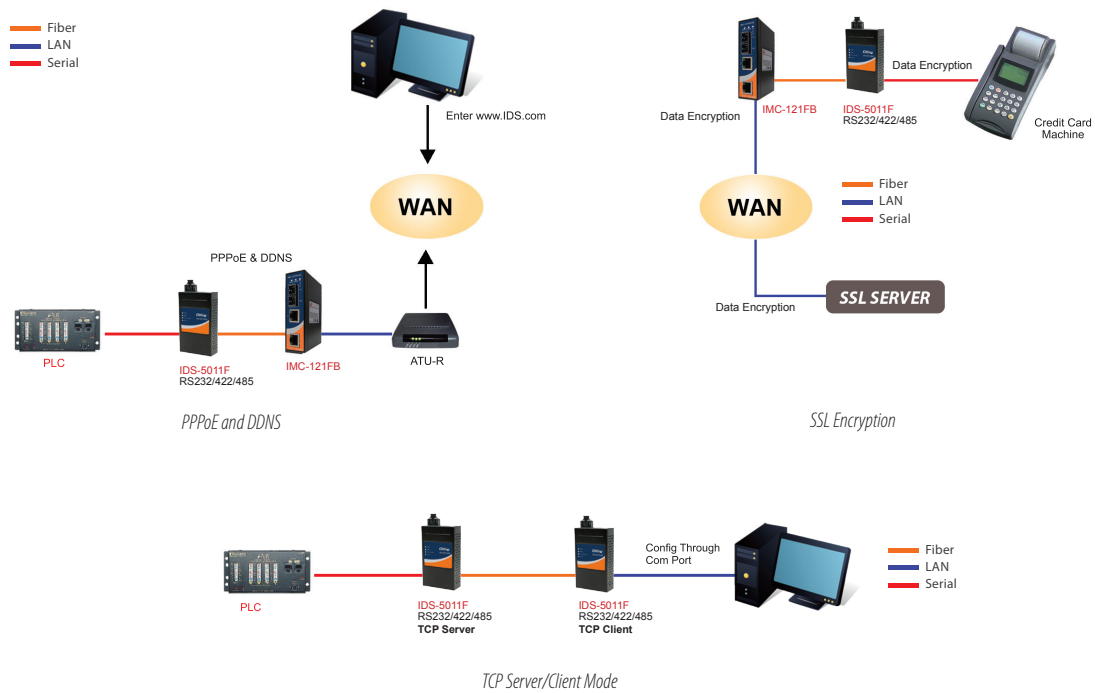
In practical operation of serial device servers, Windows utility (DS-Tool) is supported. This utility is very helpful for you to manage and monitor all of industrial device servers in the industrial network.



Multiple Host PCs

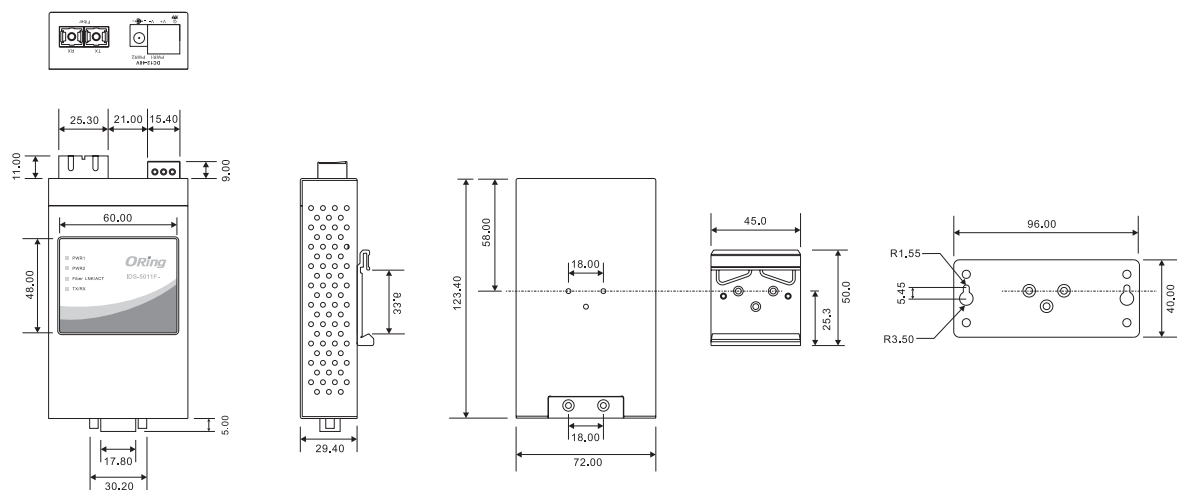


NAT Router Pass-Through



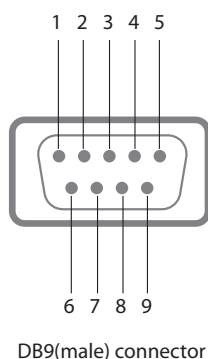
DS-Tool (Windows Utility): Monitoring and Configuration interface

## Dimensions



Unit=mm

## Pin Assignment



Pin #	RS-232	RS-422	RS-485 (4 wire)	RS-485 (2 wire)
1	DCD	RXD -	RXD -	-
2	RXD	RXD +	RXD +	-
3	TXD	TXD +	TXD +	DATA +
4	DTR	TXD -	TXD -	DATA -
5	GND	GND	GND	GND
6	DSR	-	-	-
7	RTS	-	-	-
8	CTS	-	-	-
9	RI	-	-	-
RS-232 mode act as DTE				

## Specifications

ORing Device Server Model	IDS-5011F-MM-SC	IDS-5011F-SS-SC
Fiber Ports		
Fiber Ports Number	1	1
Fiber Ports Standard	100Base - FX	100Base - FX
Fiber Mode	Multi-mode	Single-mode
Fiber Diameter (μm)	62.5/125 μm 50/125 μm	9/125 μm
Fiber Optical Connector	SC	SC
Typical Distance (km)	2 km	30 km
Wavelength (nm)	1310 nm	1310 nm
Max. Output Optical Power (dBm)	-14 dBm	-8 dBm
Min. Output Optical Power (dBm)	-23.5 dBm	-15 km
Max. Input Optical Power (Saturation)	0 dBm	0 dBm
Min. Input Optical Power (Sensitivity)	-31 dBm	-34 dBm
Link Budget (dB)	7.5 dB	19 dB
Serial Ports		
Connector	DB9(male) x 1	
Operation Mode	RS-232 / RS-422 / 4(2)-Wire RS-485. Which can be configured by DS-Tool / web interface	
Serial Baud Rate	110 bps to 460.8 Kbps	
Data Bits	5, 6, 7, 8	
Parity	odd, even, none, mark, space	
Stop Bits	1, 1.5, 2	
RS-232	TxD, RxD, RTS, CTS, DTR, DSR, DCD, RI, GND	
RS-422	Tx+,Tx-, Rx+, ,Rx-,GND	
RS-485 (4-wire)	Tx+,Tx-, Rx+, ,Rx-,GND	
RS-485 (2-wire)	Data+, Data-,GND	
Flow Control	XON/XOFF, RTS/CTS, DTR/DSR	
Network Features		
Network Protocols	ICMP, IP, TCP, UDP, DHCP, BOOTP, SSH, DNS, SNMP V1/V2c, HTTPS, SMTP, SSL, PPPoE, DDNS	
LED Indicators		
Power Indicator	PWR 1(2) / Ready : Red On : Power is on and booting up Red Blinking : Indicates an IP conflict, or DHCP or BOOTP server did not respond properly Green On : Power is on and functioning Normally Green Blinking : Located by Administrator	

100Base-FX with SC Connector	Green for port Link/Act at 100Mbps
Serial TX / RX LEDs	Red : Serial port is receiving data Green : Serial port is transmitting data
<b>Power</b>	
Redundant Input Power	Dual DC inputs. 12~48VDC on 3-pin terminal block and power jack
Power Consumption (Typ.)	4 watts
Overload Current Protection	Present
Reverse Polarity Protection	Present on terminal block
<b>Physical Characteristics</b>	
Enclosure	IP-30
Dimensions (W x D x H)	72(W) x 29.4(D) x 123.4(H) mm (2.83x1.16x4.86 inch.)
Weight (g)	325 g
<b>Environmental</b>	
Storage Temperature	-40 to 85°C (-40 to 185°F)
Operating Temperature	-40 to 70°C (-40 to 158°F)
Operating Humidity	5% to 95% Non-condensing
<b>Regulatory Approvals</b>	
EMI	FCC Part 15, CISPR (EN55022) class A
EMS	EN61000-4-2 (ESD), EN61000-4-3 (RS), EN61000-4-4 (EFT), EN61000-4-5 (Surge), EN61000-4-6 (CS), EN61000-4-8, EN61000-4-11
Shock	IEC60068-2-27
Free Fall	IEC60068-2-32
Vibration	IEC60068-2-6
Safety	EN60950-1
MTBF (Hours) (MIL-HDBK-217F2, GB, GC, 25°C)	1,068,579
Warranty	5 years

## Ordering Information

IDS-50 **A** **B** **C** - **DD**

Code Definition	Serial Port Number	Ethernet Port Number	Fiber Port Identification	Fiber Optical Mode
<b>Option</b>	- <b>1</b> : 1 port	- <b>1</b> : 1 port	- <b>F</b> : 100Base-FX - <b>""</b> : 10/100Base-T(X)	- <b>MM</b> : Multi-mode Fiber - <b>SS</b> : Single-mode Fiber

	Model Name	Description
Available Model	IDS-5011F-MM-SC	Industrial 1-port secure serial to Ethernet device server with 1xRS-232/422/485 and 1x100Base-FX, multi-mode, 2km/1310nm, SC connector
	IDS-5011F-SS-SC	Industrial 1-port secure serial to Ethernet device server with 1xRS-232/422/485 and 1x100Base-FX, single-mode, 30km/1310nm, SC connector
<b>Packing List</b>		<b>Optional Accessories (Can be purchased separately)</b>
<ul style="list-style-type: none"> <li>IDS-5011F</li> <li>DIN-Rail Kit</li> <li>Wall-mount Kit</li> <li>ORing Tool CD</li> <li>Quick Installation Guide</li> </ul>		<ul style="list-style-type: none"> <li>DR-45 series, 45W DIN-Rail power supply</li> <li>DR-75 series, 75W DIN-Rail power supply</li> <li>DR-120 series, 120W DIN-Rail power supply</li> <li>SDR-240-48, 240W DIN-Rail power supply</li> <li>SDR-480-48, 480W DIN-Rail power supply</li> <li>PAA-121000, 12VDC/1000mA 12W Power Adapter, US plug</li> <li>PAE-121000, 12VDC/1000mA 12W Power Adapter, EU plug</li> </ul>